

# 14 M Utility Launches

## 14 M Utility Launches

### HULL CHARACTERISTICS

The hull shape is formed with very fine entry, steep, soft riding forward bottom sections, wide dry flare deck and fairly shallow V at the transom, and is ideally suited for offshore application where smooth ride and seaworthiness become very important purchase considerations

### Principal Particulars

|                       |                              |
|-----------------------|------------------------------|
| Construction Material | Marine Grade Aluminium Alloy |
| Length (Overall)      | 13.80 m                      |
| Beam                  | 4.39 m                       |
| Depth                 | 3.00 m                       |
| Draft                 | 1.20 m                       |
| Speed                 | 22 knots                     |
| Main Engine Power     | 2 x 340 HP                   |
| Propulsion            | Fixed Propeller              |
| No. of Passenger      | 41                           |
| Fuel Capacity         | 1200 L                       |
| Fresh Water Capacity  | 500 L                        |

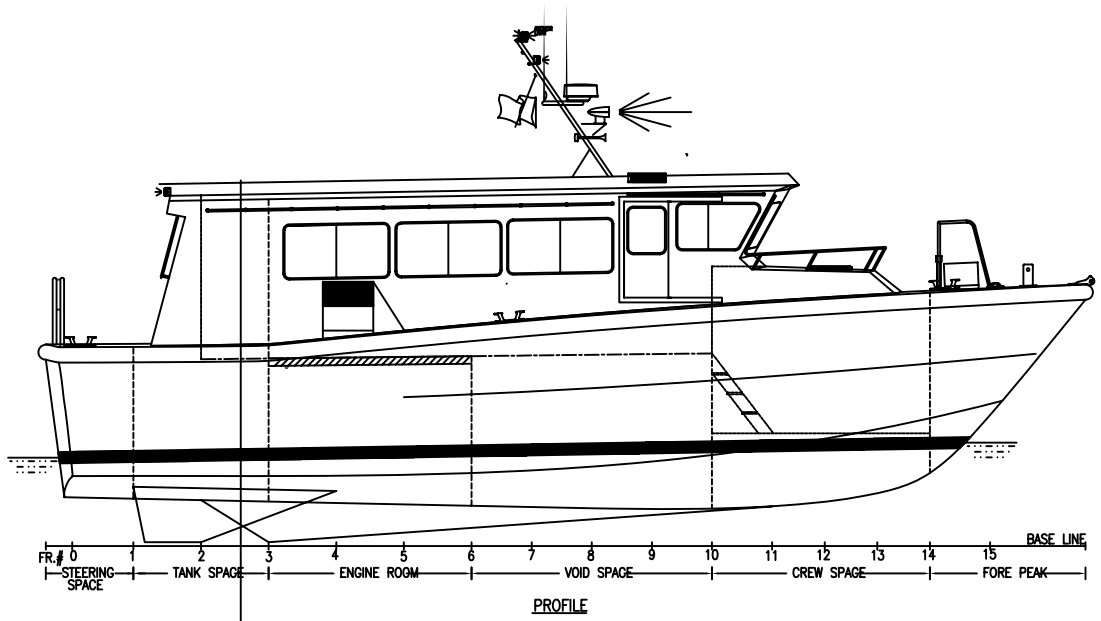


**WANG TAK ENGINEERING &  
SHIPBUILDING CO. LTD.**  
**宏德機器鐵工廠有限公司**

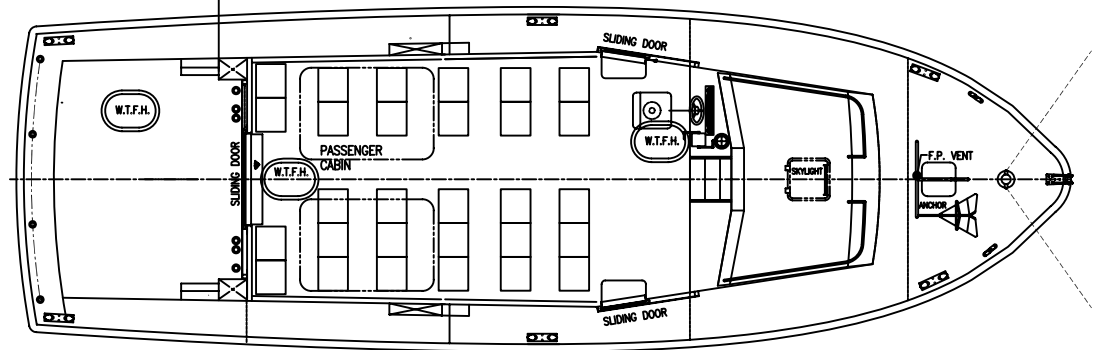
Wang Tak Building, 85 Hing Wah Street West, Lai Chi Kok, Kowloon, Hong Kong

香港九龍荔枝角興華街西85號宏德大廈

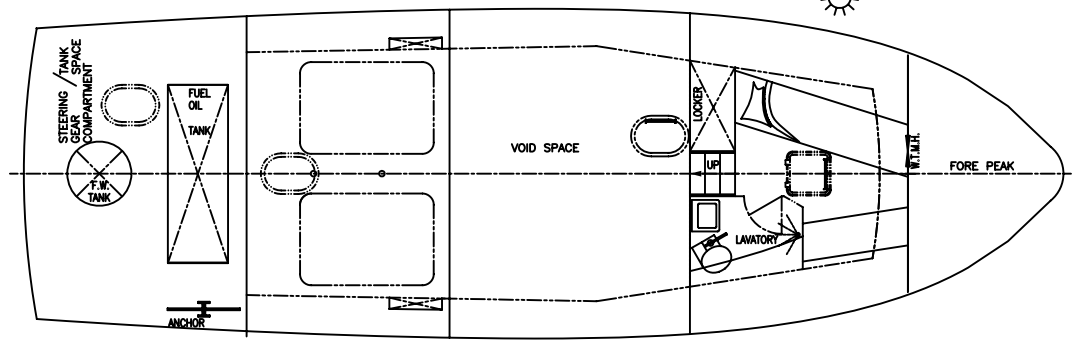
Tel (電話) : 2746 2888 Fax (圖文傳真) : 2307 5500 E-mail (電子郵件) : info@wangtak.com.hk



PROFILE



MAIN DECK PLAN



PLAN BELOW MAIN DECK

**PRINCIPAL DIMENSIONS**

|                     |         |
|---------------------|---------|
| LENGTH O.A.         | 13.84 M |
| BEAM O.A.           | 4.39 M  |
| DEPTH AT MIDSHIP    | 3.00 M  |
| DRAFT AFT (APPROX.) | 1.20 M  |
| PREEBOARD           | 2.2 M   |
| PREEBOARD AFT.      | 1.3 M   |

| REV. NO.   | REV | DESCRIPTION             | REVISION DATE | REVISED BY | ISSUED FOR | ISSUE DATE | APPROVED BY |
|--|-----|-------------------------|---------------|------------|------------|------------|-------------|
| <b>WANG TAK ENGINEERING &amp; SHIPBUILDING CO., LTD.</b> |     |                         |               |            |            |            |             |
| REF. NO.   |     | 13.8 M PASSENGER LAUNCH |               |            |            |            | SCALE:      |
| DESIGNED BY:   |     | TITLE:                  |               |            |            |            | MARK:<br>A  |
| DRAWN BY:  |     | GENERAL ARRANGEMENT     |               |            |            |            |             |
| CHECKED BY:  |     | "SEASWIFT"              |               |            |            |            |             |
| APPROVED BY:   |     | DWG. NO.                |               |            |            |            |             |
| DATE:  |     | Y932-G-01A              |               |            |            |            |             |